



**SDLG machines** are built to be like the people that own them: hardworking, genuine and reliable. Cost effective, robust machines with fuel efficient engines that are easy to operate and easy to maintain. When you need parts or service, you can trust your dealership to deliver on the SDLG promise:  
**Reliability in Action.**



Congratulations SDLG for winning  
**EFQM Global Excellence Award**  
One of the top three quality awards in the world

**Member of the VOLVO Group Since 2007**

SDLG is member of the Volvo Group and one of the largest manufacturers of construction machinery in China, with a wide network of dealerships and service workshops throughout the world.

**Shandong Lingong Construction Machinery Co., Ltd**

Add: Lingong Industry Park, Economic Development Zone, Linyi, Shandong, P, R, C.  
Tel: 0086-531-66590966 Fax: 0086-531-66590959 E-mail: export@sdlg.com

**Reliability in Action**



**B877F**  
**Backhoe Loader**





### A variety of configurations

The new B877F sideshift backhoe loader from SDLG is available in a variety of alternative configurations, allowing you to select the version that best suits your needs.

A remarkably efficient and versatile machine, whether you are operating the loader or the excavator, the B877F has the power and maneuverability to handle most jobs.

### Specify the machine to suit your needs

Choose to specify your B877F with either a multi-purpose or a general purpose loader bucket, together with an extendable or a standard arm.

There is also a wide range of attachments to choose from, such as different size excavator buckets, mechanical quick-coupler and flip-over forks. If you require additional hydraulics (for example, for a hydraulic breaker) the B877F can also be equipped with these to suit your needs.

### Safety features

- Hydraulic boom lock for safe and easy release
- Battery disconnect switch
- Engine fan guard
- Wide opening angle on the door, making entry and exit safe and easy
- Loader arm safety strut
- Dual rotating beacons
- ROPS/FOPS cab

- 1 Access to the engine is made easy through the large, rear-hinged engine hood. To improve maintenance access, all filters are grouped inside the engine bay. The high-capacity radiator is also easily accessed via the large engine hood opening.
- 2 The spacious, air-conditioned cab provides the operator with excellent visibility all around the machine, and plenty of space for turning between the loader and excavator controls.
- 3 The B877F is equipped with an improved loader linkage system to provide powerful breakout force, and comes with a 1 m<sup>3</sup> loader bucket as standard.
- 4 The powerful 70kW Yuchai engine supplies the hydraulic system with enough power for a reliable constancy of flow so you can be certain of having the power you need, when you need it, to get the job done.
- 5 A 55° steering angle provides excellent maneuverability when working in confined areas. This, together with the 100% differential lock on the rear axle means that you can reliably cope with any condition.



\*The illustration may include optional equipment.



# EQUIPMENT AND FEATURES

## Standard equipment

- Fully openable rear windows
- Adjustable steering column
- Air conditioning and heater
- Radio
- Rotating beacon
- LED worklights
- LED rear lights
- 1 m³ General Purpose loader bucket with teeth
- 625mm excavator bucket with teeth and side cutters
- 4-wheel drive
- 70 kW Tier II engine
- Engine fan guard
- Fuel strainer
- 2 stage air filtration
- 12.5/ 80- 18 front wheels
- 18.4 - 26 rear wheels
- Differential lock on rear axle

- Hydraulic boom lock
- Hydraulic end dampening on swing and arm cylinder
- Front rubber bumpers
- Loader safety strut
- Tool box

## Optional Equipment

- Extendable arm
- Hydraulic breaker circuit
- License plate bracket
- Front fenders
- Air pre-filter
- 16.9-28 rear wheels
- Rear light protection

# SPECIAL FEATURES

**1 Cab fitted** with adjustable seat and adjustable steering column for all-day operator comfort leading to higher productivity. Ideally-placed controls and a high-performance heating / AC system. Excellent all-around visibility is provided by more glass, a sloping hood and narrow pillars.



**2 Loader performance** benefits from easy-to-handle control levers working in harmony with efficient hydraulics and powerful lift and breakout forces. Oil delivery is continuously adapted to provide power where and when needed throughout the parallel-lift linkage loading system.



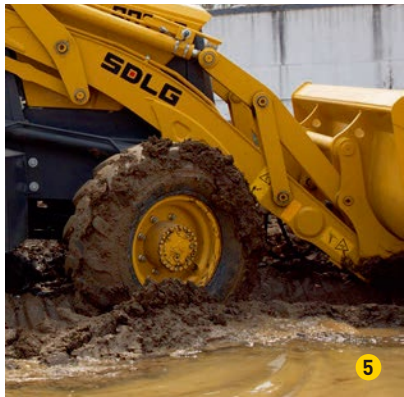
**3 Excavator controls** are easy to access, with plenty of room to turn in the cabin, and designed to provide an ideal working position with spacious leg room. The comfortable working environment combined with efficient hydraulics ensures reliable levels of productivity.



**4 Fixed-flow hydraulics** equipped with three fixed-displacement hydraulic gear pumps. These generate constant flow at different pressure levels to feed all the machine's hydraulic functions. Reliable and sturdy, with easy maintenance access for lower operating costs.



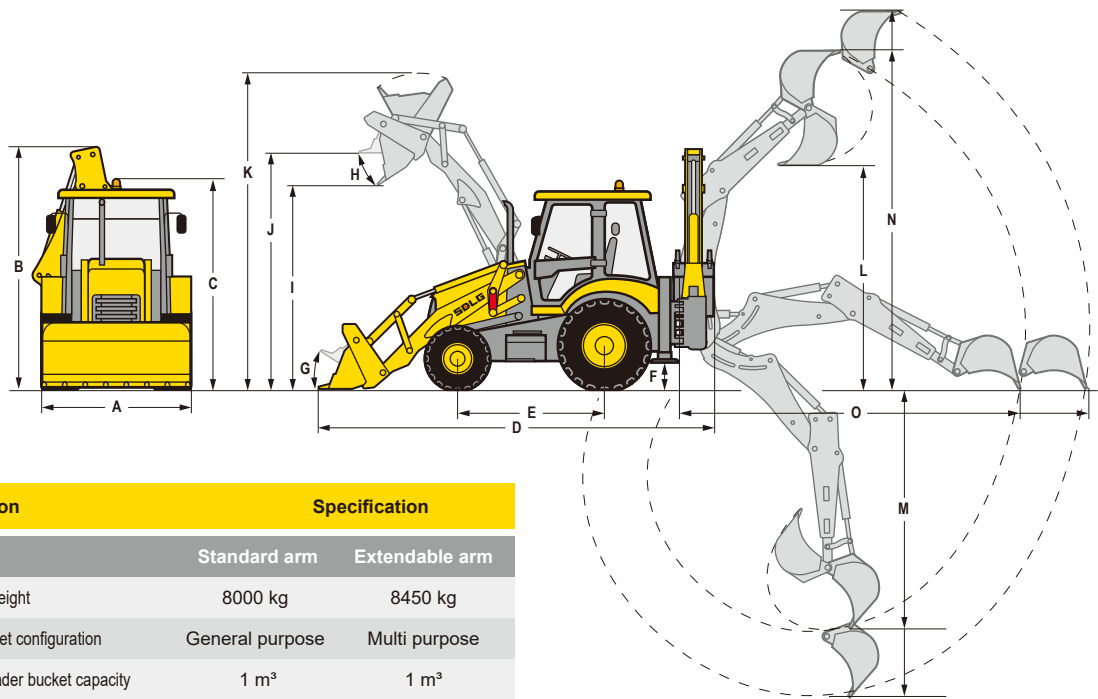
**5 Excellent maneuverability** and positioning with a steering angle of 55°. The B877F is equipped with a 100% differential lock which operates on the rear axle, providing maximum rear wheel grip on slippery ground. This is engaged via a foot switch on the side of the brake pedal.



**6 Maintenance access** is made easy, saving time with a one-piece tilting hood and grouped service points. These are easily visible and accessible from ground level for more uptime and lower operating costs.







Description	Specification	
	Standard arm	Extendable arm
Operating weight	8000 kg	8450 kg
Loader bucket configuration	General purpose	Multi purpose
Standard loader bucket capacity	1 m³	1 m³
Standard excavator bucket width	625 mm	625 mm
ROPS / FOPS cab	Yes	Yes
Lift capacity (rated load)	1800 kg	1800 kg
Maximum tractive force	82 kN	82 kN
Maximum digging force	58 kN	58 kN
Minimum turning radius	4118 mm	4118 mm
Noise level inside cab	84 dB	84 dB
Noise level outside cab	108 dB	108 dB
Dimensions	Standard arm	Extendable arm
A. Overall width	2350 mm	2350 mm
B. Overall height	3608 mm	3608 mm
C. Height to top of cab (including beacon)	3158 mm	3158 mm
D. Overall length	5917 mm	5917 mm
E. Wheelbase	2170 mm	2170 mm
F. Ground clearance	346 mm	346 mm
G. Roll back angle ground level	42°	42°
H. Dump angle	45°	45°
I. Dump height	2693 mm	2693 mm
J. Load over height	3475 mm	3475 mm
K. Maximum operating height loader	4420 mm	4420 mm
L. Loading clearance excavator	3570 mm	4263 mm
M. Maximum digging depth	4303 mm	5303 mm
N. Operating height excavator	5387 mm	6060 mm
O. Reach from swing post at ground level	5352 mm	6260 mm
Maximum excavator bucket rotation	194°	194°

Description	Specification
Excavator	
Maximum digging force excavator bucket	58 kN
Maximum digging force excavator arm	38 kN
Maximum break-out force excavator	47.5 kN
Loader	
Maximum break-out force loader	57 kN
Maximum break-out force loader arm	50 kN
Maximum lift capacity loader (GP bucket)	3180 kg
Maximum lift capacity loader (MP bucket)	2935 kg
Engine	
Brand	Yuchai
Model	YC4A
Type	In line,water cooled,four stroke direct injection
Rated Power (Gross)	70 kW
Maximum torque @ 1 400 - 1 700 rpm	420 Nm
Bore / stroke	108 / 132 mm
Displacement	4837 ml

Description	Specification
Transmission	
Brand, model and type	Carraro TLB1-4WD Powershuttle
Gears forward	4
Gears reverse	4
Maximum speed forward	38 km/h
Maximum speed reverse	38 km/h
Service brake type	hydraulic power assist
Parking brake type	Caliper disc
Front axle	
Brand and model	Carraro 26.22 - 1920
Steering angle	55°
Tires	
Dimension front	12.5 - 18
Dimension rear	18.4 - 26
Front tire pressure	0.43±0.01 Mpa
Rear tire pressure	0.22±0.01 Mpa

Description	Specification
Rear axle	
Brand, type and model	Carraro wet brake 28.44 - 1800
Differential lock	Yes
Hydraulics	
Type	HP3V80
Maximum flow	176 L/min
Working pressure excavator	23.5 Mpa
Working pressure loader	23.5 Mpa
Service fill capacities	
Fuel	135 L
Hydraulic oil	165 L
Axes (main and final drives)	7.5 + 0.8 * 2/15 L
Engine	11 L
Transmission	20 L
Anti freeze	18 L

OPTIONAL ATTACHMENTS

Attachment type		Specification				
Loader attachments		Width	Weight	Capacity	Number of teeth	
General Purpose bucket		2350 mm	943 mm	1 m³	8	
Multi Purpose bucket		2350 mm	989 mm	1 m³	8	
Multi Purpose bucket (with pallet forks)		2350 mm	1091 mm	1 m³	8	
Pallet forks		2350 mm	1091 mm	1 m³	8	
		1560 mm	673mm	/	/	
Excavator attachments		Width	Weight	Capacity	Number of teeth	Side cutters
General Purpose bucket		625 mm	866 mm	0.18 m³	4	2
		310 mm	866 mm	0.08 m³	3	2
		410 mm	866 mm	0.11 m³	3	2
		465 mm	866 mm	0.13 m³	3	2
		765 mm	866 mm	0.23 m³	5	2
		765 mm	866 mm	0.23 m³	5	0
		925 mm	866 mm	0.3 m³	6	2
Grading bucket		1210 mm	665 mm	0.21 m³	0	0

\* The right of final interpretation of the abovementioned parameters shall be reserved by SDLG. No further notice will be given in case of any change. Illustrations in the text may not always be the standard illustrations for this model.