



SDLG machines are built to be like the people that own them: hardworking, genuine and reliable. Cost effective, robust machines with fuel efficient engines that are easy to operate and easy to maintain. And when you need parts or service, you can trust your dealership to deliver on the SDLG promise: **Reliability in Action.**



Congratulations SDLG for winning
EFQM Global Excellence Award
One of the top three quality awards in the world

Shandong Lingong Construction Machinery Co., Ltd.

Add: Lingong Industry Park, Economic Development Zone, Linyi, Shandong, P, R, C.
Tel: 0086-531-66590966 Fax: 0086-531-66590959 E-mail: export@sdlg.com

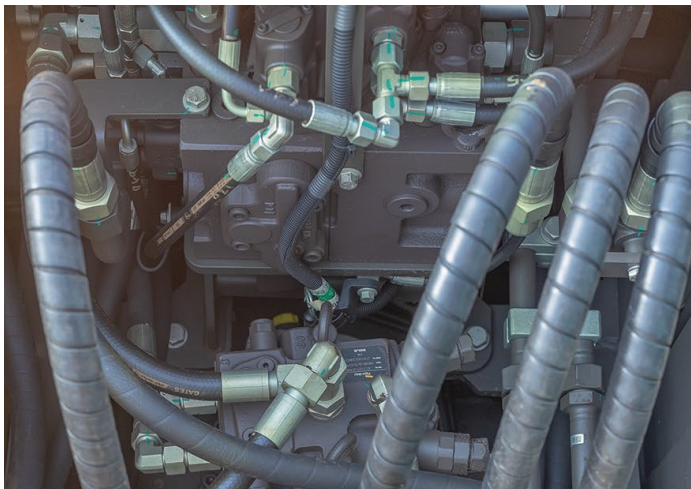
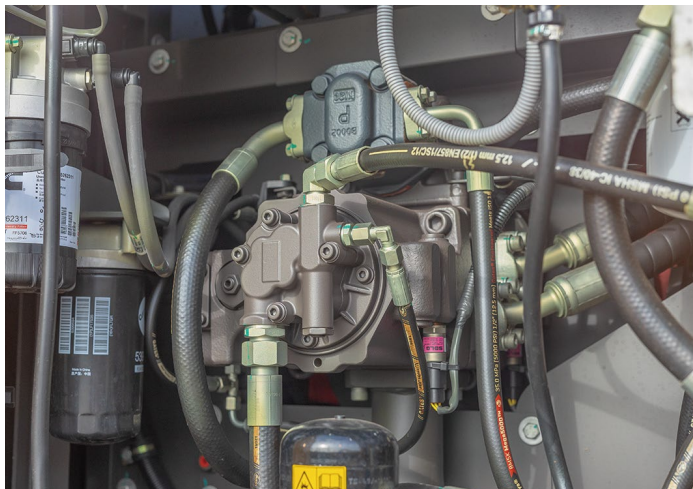
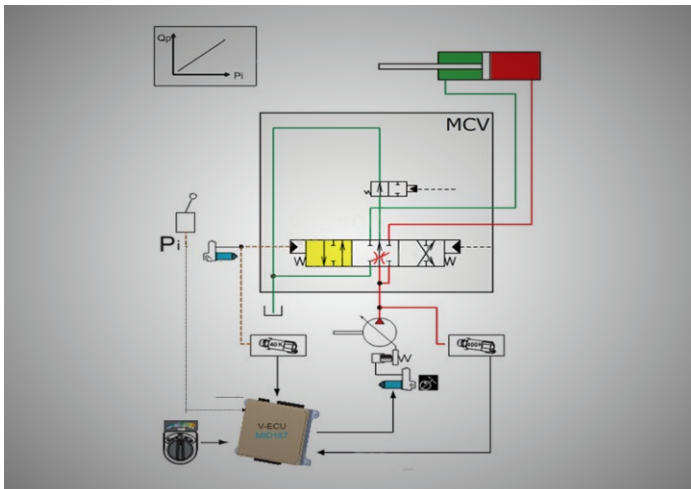
Reliability in Action

E7150H
Hydraulic Excavator



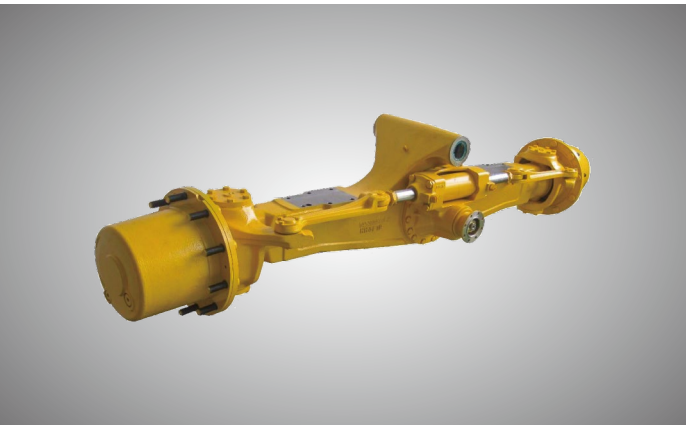
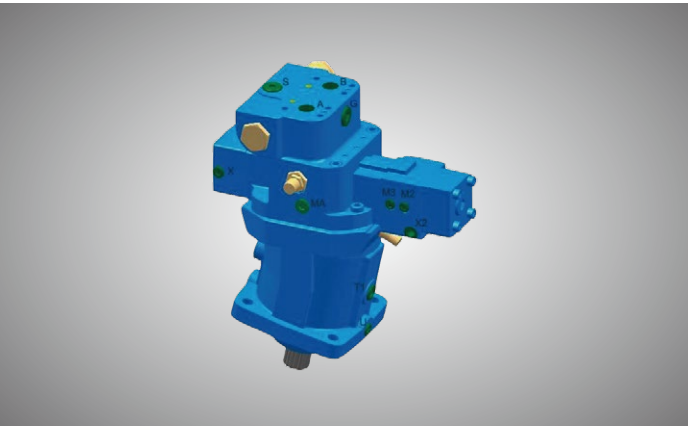
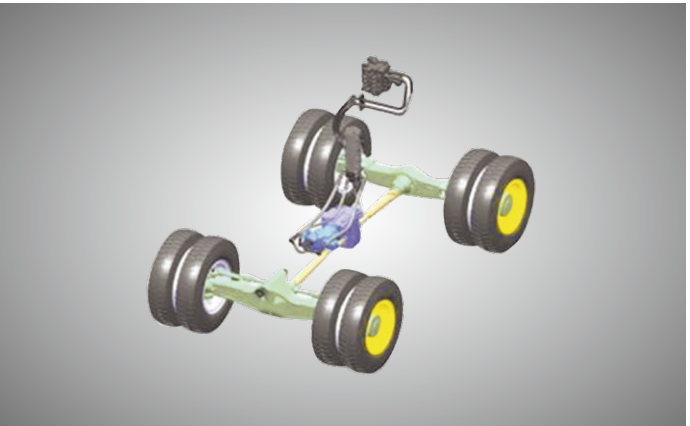
Low fuel consumption high efficiency

- New engine with unit pump fuel system, higher injection pressure, higher working efficiency and lower fuel consumption
- Excellent fuel adaptability, durable and reliable, long lifetime
- Four working mode selectable, switch working mode according to working condition easily for higher working efficiency
- Adopts the most advanced electro-hydraulic system, perfect power utilization rate among engine and hydraulic system, quick response, higher efficiency, better operating precision



Reliable Quality

- ZF reinforced wet bridge has reasonable load distribution, uniform stress, stable performance and long service life
- Equipped with ZF fixed-axis electro-hydraulic shift gearbox, the performance is reliable and the operation is simple and flexible
- Variable inclined shaft plunger motor provides power for front and rear axles, with small size, light weight and high transmission efficiency



- Enhanced working device, wear-resistant bucket, upper frame with middle bearing, and lower frame with three-box structure provide high strength and long service life
- With robot welding and inspection by weld flaw detector, ex-factory with zero defect and high reliability are guaranteed



Multiple protection human and machine safety

- The hydraulic lock of the dozer blade cylinder can prevent the hydraulic oil from leaking and causing the cylinder to retract during bulldozing and digging
- Axle locking function can prevent the machine body from shaking
- Dual-circuit fully hydraulic wet brake, if one circuit fails, the other circuit can still work. Besides, the working device can be locked by depressing service brake pedal, which is safe and reliable



Intelligent control comfortable operation

- The ROPS cab with simple and fashionable appearance, large interior space, wide field of view, easy-reaching buttons and comfortable seat
- An 8-inch LCD color touch screen as standard, which can be operated by using both buttons and touch screen to select operation mode
- The right control box integrates switches for paging, throttle adjustment, travel speed adjustment, and high power mode, which are within easy reach and easy to operate
- The front axles are equipped with hydraulic shock-absorbing cylinders to ensure the stability of the machine body even in poor road conditions



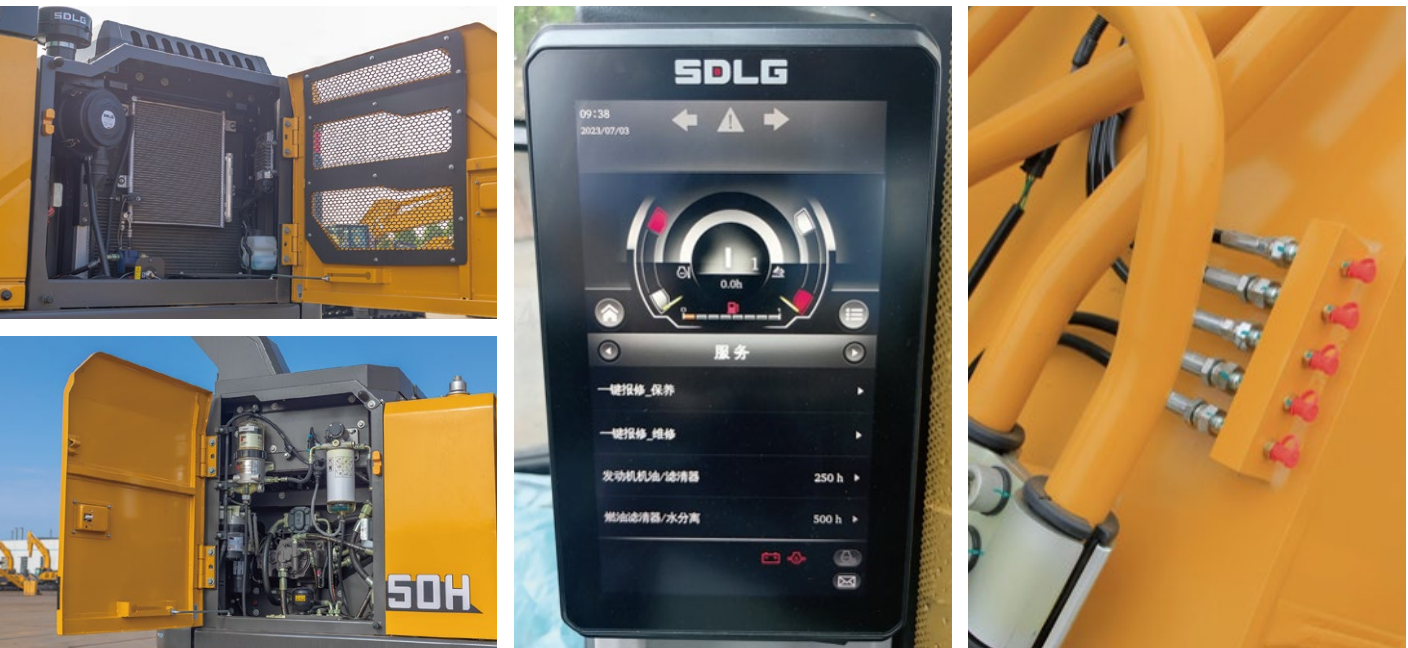
Upgrading configuration with more function

- One-button switching between forehand and backhand
- Equiped quick coupler & pipeline, Hydraulic breaker/scissor pipeline, attachment swing pipeline, easy to install and change various attachments, convenient and efficient
- Front dozer as standard and rear outrigger is optional, it improves machine stability and comfort when digging material



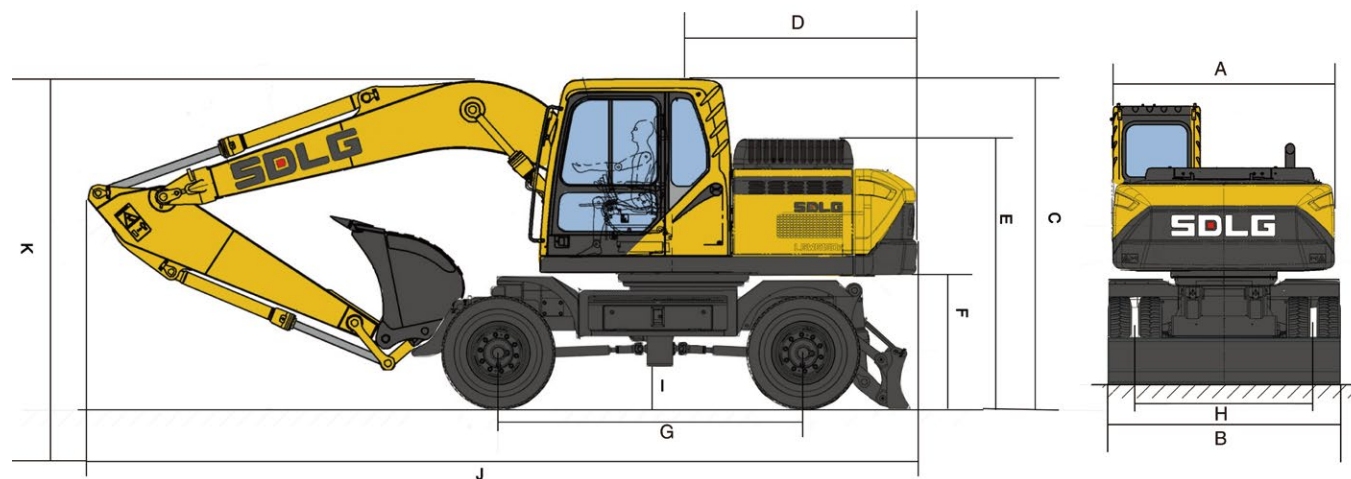
Easy maintenance

- Large open size engine hood for large space, filters all gathered together, convenient to replace
- Lubrication pipes gathered together, IECU maintenance reminder, filter block remind, water in fuel remind, reduce machine downtime



E7150H

Main Parameter



Item	Specifications
Overall dimensions	
Overall width of upper assembly(A)	2490mm
Overall width(B)	2520mm
Overall height(C)	3190mm
Tail swing radius(D)	2230mm
Overall height of engine hood(E)	2760mm
Ground clearance of counterweight(F)	1200mm
Wheelbase(G)	2800mm/2600mm(outrigger)
Crawler gauge(H)	1944mm
Min. ground clearance(I)	350mm
Overall length(J)	7830mm/7770mm(outrigger)
Overall height of boom(K)	3060mm

Item	Specifications
Overall parameters	
Bucket capacity	0.6m ³
Overall operating weight	14850kg/15950kg(outrigger)
Max. excavation force	75.7kN
Slew speed	12.2r/min
Traveling speed (low/high)	3.6/37.5km/h
Max. digging radius	8210mm
Max. digging depth	4995mm
Max. digging height	8840mm
Max. dumping height	5870mm
Min. front slewing radius	2595mm

Item	Specifications
Engine	
Model	BF4M1013-16T2
Type	four-stroke、turbocharged、inter-cooled
Engine power	116kW
Displacement	4764ml
Cylinder bore × stroke	4-108×130mm
Emission standard	GB20891-2014(China Tier 2)
Min.fuel-consume ratio	210g/kW.h
Max. torque/speed	650N.m/1500r/min
Traveling/swing system	
Qty. of track rollers (single side)	/
Qty. of carrier rollers (single side)	/
Traveling brake type	Full hydraulic compound wet disc brake
Swing mode	Hydraulic drive internal tooth single-row ball-bearing
Swing brake type	Wet and disc type
Hydraulic system	
Hydraulic control type	Electro-hydraulic proportional control

Item	Specifications
Hydraulic system type	Full electro-hydraulic controlled positive flow system
Max. flow	(2X150+20)L/min
Main pump model	V90N75D
Operating pressure	35.5MPa
Main valve model	HVME180B
Arm cylinder - cylinder bore × diameter of piston rod × stroke	1-115×75×1045mm
Boom cylinder - cylinder bore × diameter of piston rod × stroke	2-110×60×980mm
Bucket cylinder - cylinder bore × diameter of piston rod × stroke	1-95×65×865mm
Fill capacity	
Fuel	290L
Engine oil	16L
Hydraulic oil	Tank100L+System 200L/215 L(outrigger)
Antifreeze	28 L
Traveling reducer	-
Slewing reducer fuel amount	Gear oil 3.8+grease 0.5L

* The right of final interpretation of the abovementioned parameters shall be reserved by SDLG. No further notice will be given in case of any change, Illustrations in the text may not always be the standard illustrations for this model.