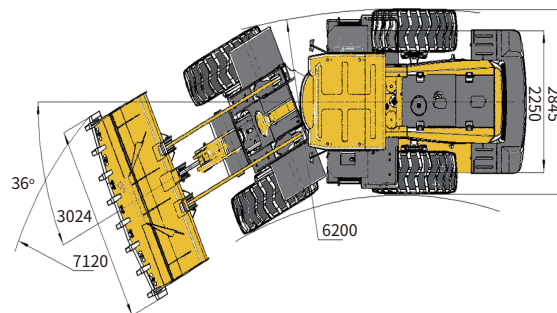
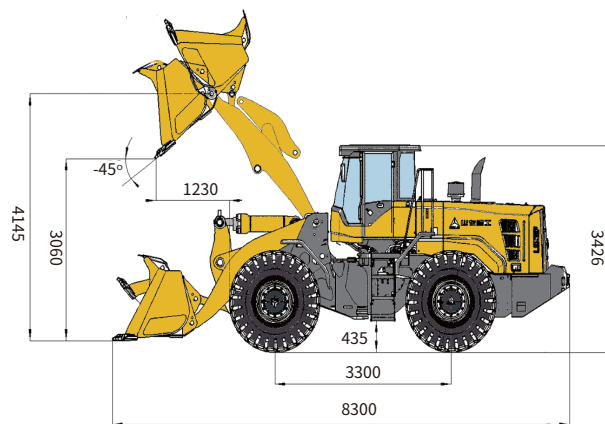


Main Parameter (Standard Equipment)

Item	Specifications	Item	Specifications
Overall parameter		Speed at FI(km/h)	0-13
Operating weight (kg)	17220	Speed at FII(km/h)	0-38
Rated load (kg)	5400	Speed at RI(km/h)	0-17
LxWxH (mm)	8300×3024×3426	Hydraulic system of working device	
Bucket capacity (m³)	3.2	System pressure(Mpa)	19.7
Max. tractive force (kN)	165	Total cycle time(bucket lift&dump&fall)(s)	≤9.8
Max. breakout force (kN)	≥170	Steering system	
Tipping load (kN)	≥110	System pressure(Mpa)	16
Engine		Fill capacity	
Rated power@speed(kW@r/min)	162@2000	Fuel (L)	300
Maximum torque@speed(Nm@r/min)	986@(1300-1400)	Hydraulic oil (L)	240
Emission standard	Tier II (GB 20891-2007)	Engine (L)	20
Transmission system		Transmission (L)	44
Transmission type	Planetary power shift	Drive axle (L)	30+26
Gears	F2 & R1	Braking system (L)	3.5



L956H WHEEL LOADER

Operation Weight:17220 kg
Bucket capacity: 3.2 m³
Engine Power: 162 kW

Reliability in Action



EFQM

Congratulations SDLG for winning
EFQM Global Excellence Award
One of the top three quality awards in the world

Member of the VOLVO Group since 2007

SDLG is a member of the Volvo Group and one of the largest manufacturers of construction machinery in China, with a wide network of dealerships and service workshops throughout the world.

Shandong Lingong Construction Machinery Co.,Ltd

Add: Lingong Industry Park, Economic Development Zone, Linyi, Shandong, P, R, C.
Tel: 0086-531-66590966 Fax: 0086-531-66590959 E-mail: export@sdlg.com.cn



L956H Wheel Loader

HIGH EFFICIENCY

- Weichai Engine Tier 2/3
- The energy-saving low-speed engine fits well with the high-efficiency and realizes a comprehensive energy saving of more than 10%
- High market share and high reliability; Low maintenance cost



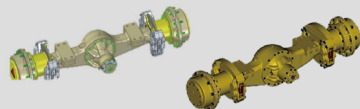
HIGH RELIABILITY

- SDLG planetary transmission, F2/R1,
- Hydraulic power shift Easy operation, high reliability, convenient maintenance. After years of market validation, long service life



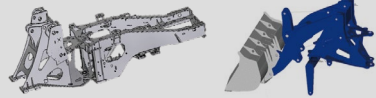
HEAVY-DUTY

- Enhanced front drive axle and oscillating rear drive axle jointly developed by Volvo and SDLG, carrying ability can reach 36T
- Stable and reliable performance, convenient operation and maintenance
- Double-swing-arm connection, stronger bearing capacity, higher reliability



GREATER RELIABILITY

- Wide articulated frame with VOLOVO technology, which has high strength and long service life
- Structures like frame and boom are optimized and enhanced, which largely increased the service life of the machine
- Long axle base and enlarged counter weight design ensures a stable working operation



GREATER LIFTING CAPACITY

- Rated load is improved to 5.4 ton, correspondingly the bucket volume is enlarged to 3.2m³, will give you higher return of investment
- Trapezoidal structure of leading plate, small working resistance, shovel with a hard material, loading capacity increases by 10%



NEW APPERANCE

- SDLG new H series apprance, including the new cab, new engine hood and counterweight which looks more powerfull and beautiful



RELIABLE & EFFICIENT HYDRAULICS

- Optimize the design of working efficient hydraulic system
- Load sensing steering system provides easy and flexible steering operating experience
- Parker multiway valves, Permco working pumps and hydraulic componts which are reliable and highly efficient are adopted



COMFORTABILITY

- Arc shape front glass, giving more operating spaces and good vision
- New H series cab, larger space, better sealing performance, more comfortable and low noise
- More air vents and new rock switch arrangement bring you new driving experience



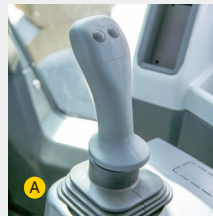
SERVICEABILITY

- New designed Engine hood provides larger opening angle, enable the technician do the service and repair easily
- Side-opening type steel-made engine hood with large side door, which is easy to maintain. Oil filters, air filters are all arranged in one side, can do the maintenance at one stop



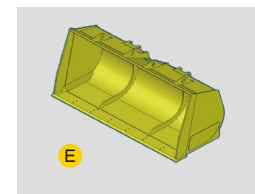
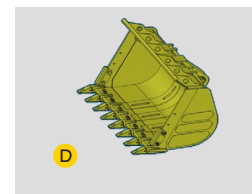
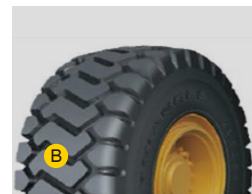
Standard Configurations

Weichai WD10G220E23	Radio
SDLG transmission	Sun visor
SDLG enhanced axle	clothes-hook
Pilot control A	Cup holder
Load sensing full hydraulic steering	Front wiper
3.2m³ gp bucket with teeth	Work lights
New H series cab	Backing-up alarm
Adjustable steering column B	23.5-25 nylon tire I-3/16pr
New rock switch C	Engine fan guard
Fresh air conditioning D	Air pre-filter G
Digital combination instrument E	Power switch
Centralized control box F	Tool box
Rearview mirror	Three-stage fuel filter



Optional Equipment

Finger tip lever A	Rotating beacon	License plate bracket	3.6m³-4.5m³ light material bucket E
23.5-25-20pr-I3 B	Third connection main valve	Heater	Rear view camera(ce)
23.5-25-20pr-e-2/I-2	Seat belt	3.0m³ bucket	Tire chain
LED work lights C	Air intake preheating	2.7m³ rock bucket D	Rotatable oil cooler



* The right of final interpretation of the abovementioned parameters shall be reserved by SDLG. No further notice will be given in case of any change. Illustrations in the text may not always be the standard illustrations for this model.