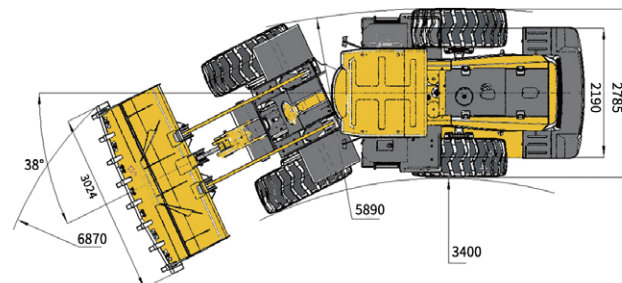
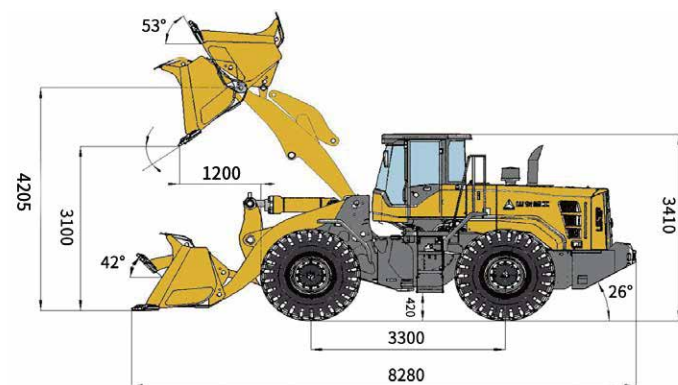


Main Parameter (Standard Equipment)

Item	Specifications	Item	Specifications
Overall parameter		Speed at FI/RII (km/h)	0~12.5
Operating weight (kg)	17400	Speed at FI/RIII (km/h)	0~26.1
Rated load (kg)	5400	Speed at FI/RIV (km/h)	0~38.2
LxWxH (mm)	8280x3024x3410	Hydraulic system of working device	
Bucket capacity (m³)	3.2	System pressure	19.5MPa
Max. tractive force (kN)	≥160	Total cycle time (bucket lift & dump&fall)	≤10.0s
Max. breakout force (kN)	≥175	Steering system	
Tipping load (kN)	≥110	System pressure	16MPa
Engine		Fill capacity	
Rated power/speed	169kw (229Hp)@2200r/min	Fuel (L)	300
Stage III	GB20891-2007 (stage II)	Hydraulic oil (L)	240
Transmission system		Engine (L)	20L
Transmission type	Axis-fixed electro-hydraulic	Transmission (L)	17.1/4.7
Gears	F4 & R4	Drive axle (L)	2x30
Speed at FI/RI (km/h)	0~6.8	Braking system (L)	4



L958F WHEEL LOADER

Operation Weight: 17400 Kg
Bucket capacity: 3.2 m³
Engine Power: 162 kW

Reliability in Action



Congratulations SDLG for winning
EFQM Global Excellence Award
One of the top three quality awards in the world

Part of Volvo Group since 2007

SDLG is part of Volvo Group and one of the largest manufacturers of construction machinery in China, with a wide network of dealerships and service workshops throughout the world.

Shandong Lingong Construction Machinery Co.,Ltd

Add: Lingong Industry Park, Economic Development Zone, Linyi, Shandong, P, R, C.
Tel: 0086-531-66590966 Fax: 0086-531-66590959 E-mail: export@sdlg.com



L958F Wheel Loader

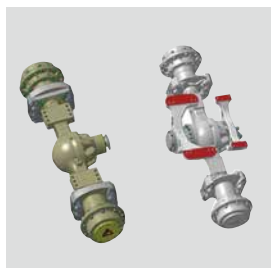
High Efficiency

- DDE Engine Tier 3–BF6M1013-22T3R
- High market share and high reliability;Fuel saving over 10%; Low maintenance cost;



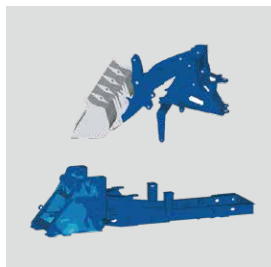
Heavy-Duty

- SDLG Strengthened structure Axle.
- The unique rear axle double swing arm connection makes the load distribution of the whole machine reasonable
- option:SDLG wet brake axle



Greater Reliability

- Fully new generation of boxed frame
- The load distribution is reasonable;Fatigue test for 200 k Hours,to get the greater reliability.



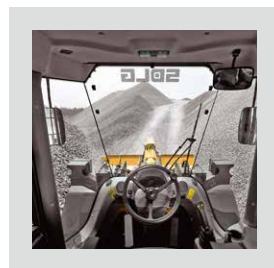
High Reliability

- SDLG VRT200 fixed-shaft electro-hydraulic shift transmission.
- F4/R4, KD Gearshift function.
- High transmission efficiency,Low cost.



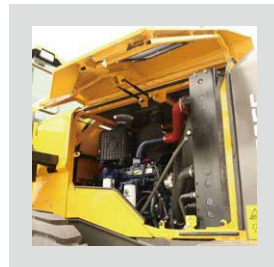
Comfortable

- The super-large,full-view, Low noise,Double curved arc front windshield enlarged 20% visibility, Luxury seat and User-friendly design,to build the best operating enviornment.
- Option: FOPS&ROPS Cab



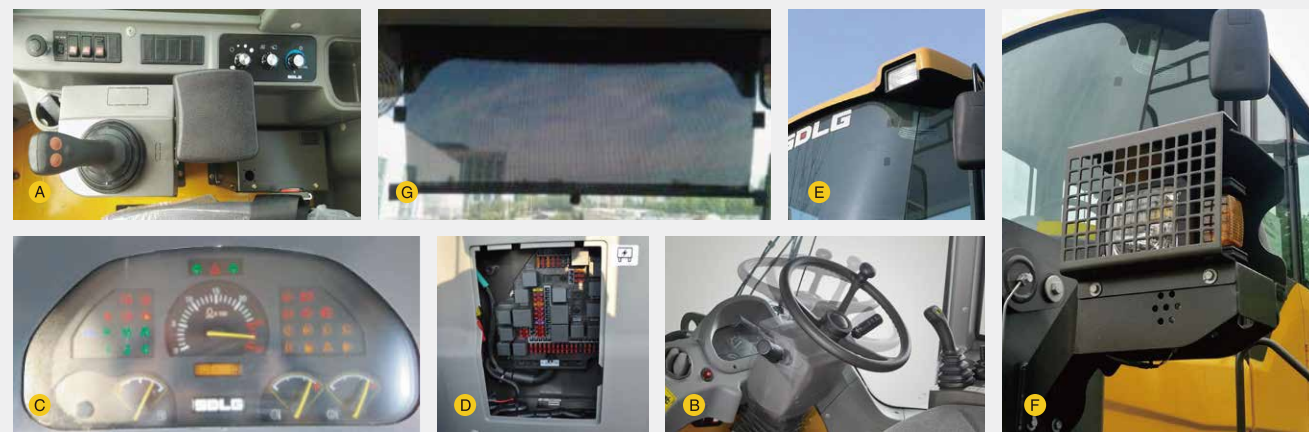
Convenience

- The engine hood adopts large upturning gate design in large opening angle,wide open compartments makes service more convenient for the daily maintenances.



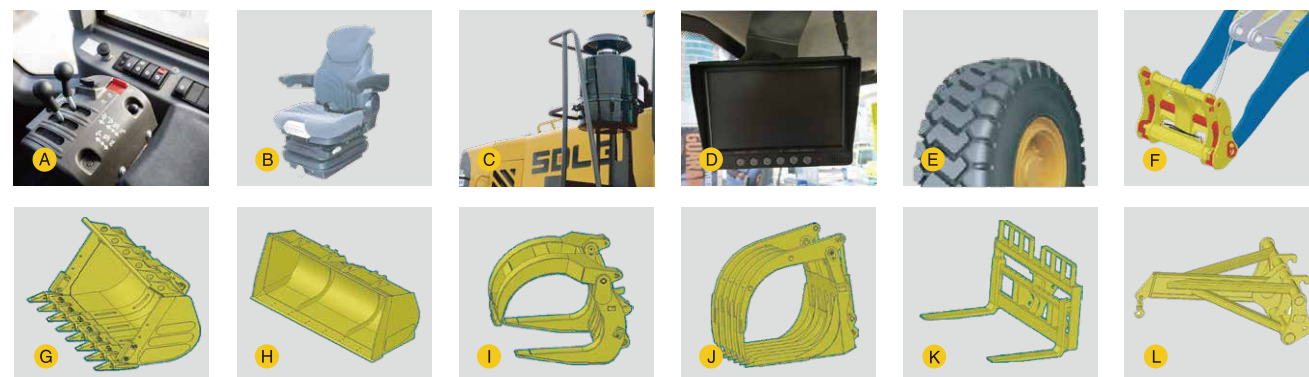
Standard Confugurations

DDE Engine	Radio
SDLG transimission	Sun visor G
SDLG dry brake Axle	Clothes-hook
Pilot control A	Cup holder
3.2m³GP bucket with teeth	Front & rear wiper
Standard cabin	Backing-up alarm
Fresh air conditioning	23.5-25 nylon tire L-3/16PR
Adjustable steering column B	Engine fan guard
Digital combination instrument C	Neutral start
Centralized control box D	Air pre-filter
Air control parking brake	Power switch
Work lights E	Tool box
Headlights guard F	



Optional Equipment

ZF transmission	Grammer seat B	Quick coupler F	Crane arm L
SDLG wet brake axle	Seat belt	2.7m³-3.2m³ rock bucket G	LED work lights
Finger tip lever A	Oil bath air filtration C	3.2m³-4.5m³ light material bucket H	Rotating beacon
Extension arm	Rear view camera D	Log grapple I	3rd function connector
Rops/Fops cabin	23.5R25 radical tire E	Grass gripper J	Air intake preheating
	23.5-25 nylon tire 18PR/20PR E	Pallet fork K	License plate bracket



* The right of final interpretation of the abovementioned parameters shall be reserved by SDLG. No further notice will be given in case of any change. Illustrations in the text may not always be the standard illustrations for this model.