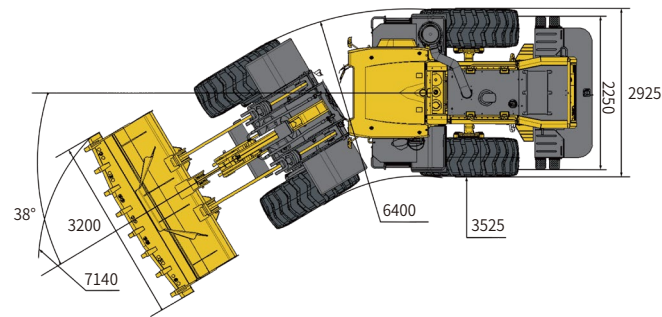
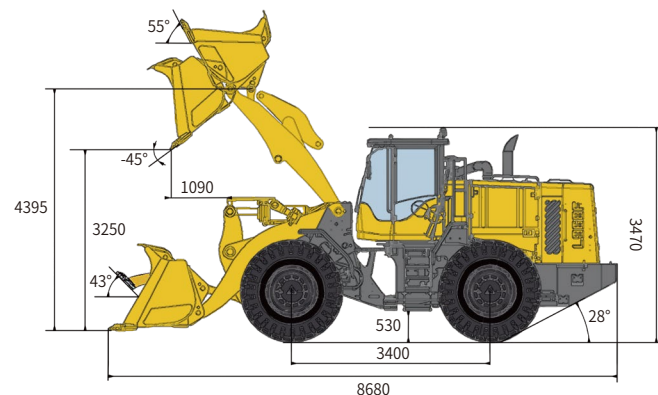


## Main Parameter ( Standard Equipment )

Item	Specifications
<b>Overall parameter</b>	
Operating weight (kg)	20700
Rated load (kg)	6000
LxWxH (mm)	8900x3200x3470
Bucket capacity (m³)	4.2
Max. tractive force (kN)	≥ 180
Max. breakout force (kN)	≥ 190
Tipping load (kN)	≥ 128
<b>Engine</b>	
Rated power/speed	178kw(242Hp)@2100r/min
Emission standard	GB20891-2007 (stagell)
<b>Transmission system</b>	
Transmission type	Axis-fixed electro-hydraulic
Gears	F4 & R4
Speed at FI/RI (km/h)	0 ~ 7.2

Item	Specifications
Speed at FI/RII (km/h)	0 ~ 13.2
Speed at FI/II/RIII (km/h)	0 ~ 27.6
Speed at FI/IV/RIV (km/h)	0 ~ 39
<b>Hydraulic system of working device</b>	
System pressure	21MPa
Total cycle time (bucket lift & dump & fall)	≤ 10.3s
<b>Steering system</b>	
System pressure	16MPa
<b>Fill capacity</b>	
Fuel (L)	350
Hydraulic oil (L)	220
Engine (L)	20
Transmission (L)	19.5/4.7
Drive axle (L)	2×40
Braking system (L)	4



# L968F WHEEL LOADER

Operation Weight: 20700 kg  
Bucket Capacity: 4.2 m³  
Engine Power: 178 kW

Reliability in Action



Congratulations SDLG for winning  
**EFQM Global Excellence Award**  
One of the top three quality awards in the world

### Part of Volvo Group since 2007

SDLG is part of Volvo Group and one of the largest manufacturers of construction machinery in China, with a wide network of dealerships and service workshops throughout the world.

NO.SDLGWHL68-Indo-202204V1

### Shandong Lingong Construction Machinery Co.,Ltd

Add: Lingong Industry Park, Economic Development Zone, Linyi, Shandong, P, R, C.  
Tel: 0086-531-66590966 Fax: 0086-531-66590959 E-mail: export@sdlg.com.cn



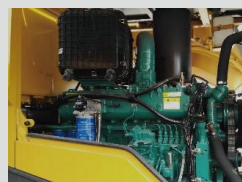


# L968F

## Wheel Loader

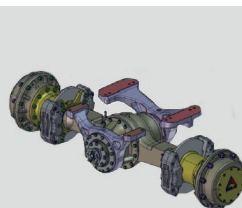
### High Efficiency

- Weichai high efficiency engine, Tier 2/ T3.
- The energy-saving low-speed engine fits well with the high-efficiency and realizes a comprehensive energy saving of more than 10%.
- High market share and high reliability; Good adaptability; Low maintenance cost.
- Propriety power matching technology, perfect combination of engine and transmission system, 15% higher than traction and breakout force with competitors.



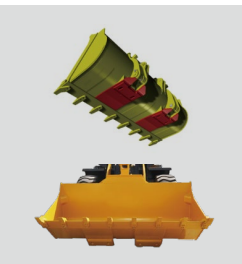
### Heavy-Duty

- Enhanced front drive axle and oscillating rear drive axle jointly developed by Volvo and SDLG; Meet the driving force and escape ability of bad conditions.
- The unique rear axle double swing arm connection makes the load distribution of the whole machine reasonable, large bearing capacity, long service life and high reliability.



### Greater Carrying Capacity

- Lift arm uses the lightweight technology, the effective load of each work cycle increased 2%, to achieve the energy saving.
- Lower resistance bucket: leading board of trapezoidal structure, makes working resistance small, can shovel with hard material, increases 10% in load capacity, improves the working efficiency greatly, reduces the use cost and saves energy.



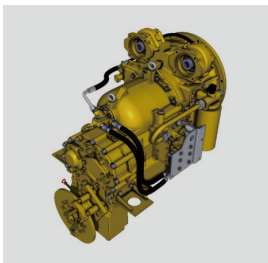
### Comfortability

- The super-large, full-view. Low noise, Double curved arc front windshield, Luxury seat and User-friendly design, to build the best operating environment.
- Option: FOPS&ROPS Cab.



### High Reliability

- It is applied with the SDLG VRT205 fixed-shaft electro-hydraulic shift transmission of four forward gears and four reverse gears, which features high transmission efficiency. It has the function of power cut-off and neutral gear lock-up, enabling stable and impact-free gearshift and high reliability; The KD gearshift function configured reduces the operating efforts and enhances the flexibility and efficiency.
- Product stability, high transmission efficiency. After years of market validation, long service life.



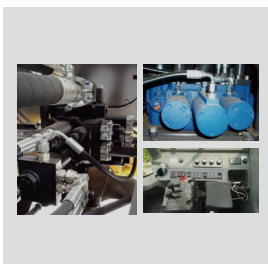
### Greater Reliability

- Fully new generation of boxed frame.
- The load distribution is reasonable; Fatigue test for 200 k Hours, to get the greater reliability.



### Branded Hydraulic Parts

- Equipped the Parker Valve hydraulic working system and PERMCO Pump, to provide the powerful and reliable and efficiency operation.



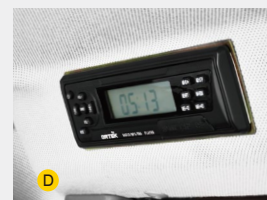
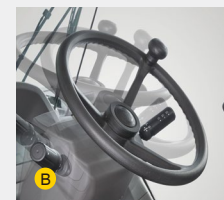
### Convenience

- Automotive-grade mold-formed steel hood with high structural strength and elegant appearance.
- The double gas spring opens the hood and is easy to operate.
- Large opening side door maintenance is more convenient.



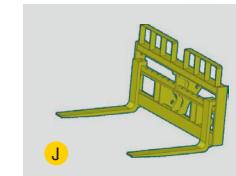
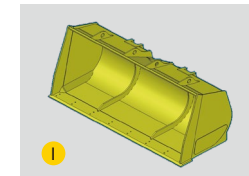
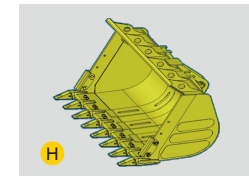
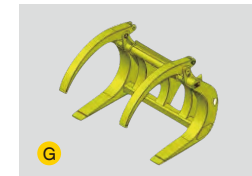
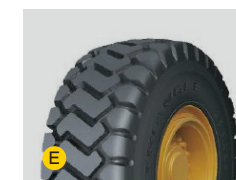
## Standard Confugurations

Weichai WD10G240E202 engine	Cup holder
VRT transmission	Centralized control box <b>F</b>
SDLG dry brake axle	Front & rear wiper
Pilot control <b>A</b>	Work lights <b>G</b>
4.2m³ GP bucket with teeth	Backing-up alarm
Standard cabin	26.5-25-20PR nylon tire L-3/20PR
Fresh air conditioning	Engine fan guard
Adjustable steering column <b>B</b>	Neutral start
Digital combination instrument <b>C</b>	Air pre-filter
Air control parking brake	Power switch
Radio <b>D</b>	Tool box
Sun visor <b>E</b>	Air inflation tube
Clothes-hook	Rotating beacon



## Optional Equipment

3-spool combined main valve	26.5 R25 radical tire <b>E</b>	CE standard rearview mirror	Low tempreture hydraulic oil
Double joystick pilot control <b>A</b>	26.5-25 nylon tire 20PR-L5 <b>E</b>	3.5m³-5.5m³ light material bucket <b>I</b>	Air intake preheating
Finger tip lever <b>B</b>	Rops/Fops cabin <b>F</b>	3rd function connector	Bucket with wear plate
Extension arm	Log grapple <b>G</b>	Pallet fork <b>J</b>	Tire chain
Oil batch air filter <b>C</b>	3.0m³ rock bucket <b>H</b>	Seat belt	Cold condition hydraulic oil
LED work lights <b>D</b>	Heater		



\* The right of final interpretation of the abovementioned parameters shall be reserved by SDLG. No further notice will be given in case of any change. Illustrations in the text may not always be the standard illustrations for this model.