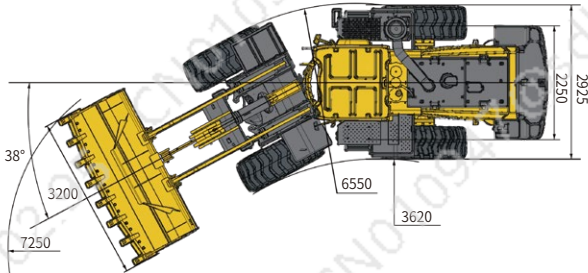
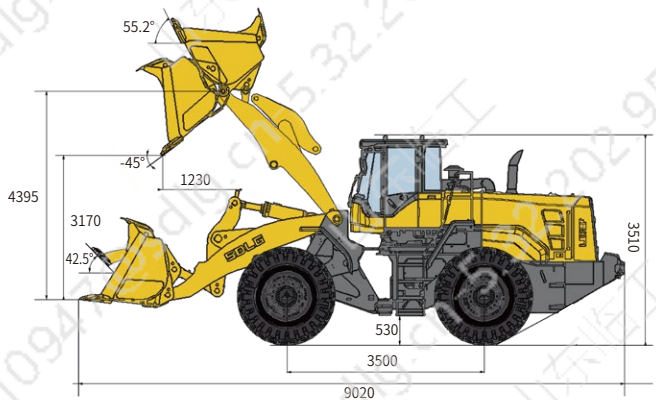


## Main Parameter ( Standard Equipment )

Item	Specifications
Overall parameter	
Operating weight (kg)	21300
Rated load (kg)	7000
LxWxH (mm)	9020×3200×3510
Bucket capacity (m³)	4.0
Max. tractive force (kN)	200
Max. breakout force (kN)	≥215
Tipping load (kN)	140.2
Engine	
Rated power/speed	199kw(270Hp) @2200r/min
Emission standard	GB 20891-2014 (stage III)
Transmission system	
Transmission type	Axis-fixed electro-hydraulic
Gears	F4 & R4
Speed at FI/RI (km/h)	0 ~ 6.8

Item	Specifications
Speed at FI/RII (km/h)	0 ~ 12.5
Speed at FI/II/RIII (km/h)	0 ~ 24.3
Speed at FI/IV/RIV (km/h)	0 ~ 35.9
Hydraulic system of working device	
System pressure	21MPa
Total cycle time (bucket lift & dump & fall)	≤9.8s
Steering system	
System pressure	16MPa
Fill capacity	
Fuel (L)	350
Hydraulic oil (L)	220
Engine (L)	20
Transmission (L)	55
Front axle (L)	40
Rear axle (L)	36



## L970H WHEEL LOADER

Operation Weight: 21300kg  
Bucket Capacity: 3.5-4.0m³  
Engine Power: 199kW

## Reliability in Action



Congratulations SDLG for winning  
**EFQM Global Excellence Award**  
One of the top three quality awards in the world

### Part of Volvo Group since 2007

SDLG is part of Volvo Group and one of the largest manufacturers of construction machinery in China, with a wide network of dealerships and service workshops throughout the world.

### Shandong Lingong Construction Machinery Co.,Ltd

Add: Lingong Industry Park, Economic Development Zone, Linyi, Shandong, P. R. C.  
Tel: 0086-531-66590966 Fax: 0086-531-66590959 E-mail: export@sdlg.com.cn





# L970H Wheel Loader

## High Efficiency

- Weichai high efficiency engine, Tier T3.
- The energy-saving low-speed engine fits well with the high-efficiency and realizes a comprehensive energy saving of more than 10%.
- High market share and high reliability; Good adaptability; Low maintenance cost.



## High Reliability

- It is applied with the VOLVO HTE220B fixed-shaft electro-hydraulic shift transmission of four forward gears and four reverse gears, which features high transmission efficiency.
- It has the function of power cut-off and neutral gear lock-up, enabling stable and impact-free gearshift and high reliability. The KD gearshift function configured reduces the operating efforts and enhances the flexibility and efficiency.



## Greater Reliability

- Fully new generation of boxed frame design by VOLVO and SDLG team.
- The load distribution is reasonable; Fatigue test for 200 k Hours, to get the greater reliability.



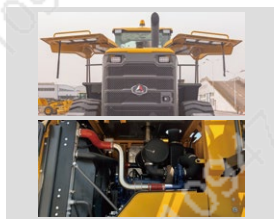
## High Quality

- Hydraulic system components use internationally renowned suppliers; Large flow, high pressure, smooth composite action.
- Lightweight operation, high efficiency and reliable performance.



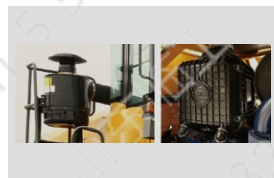
## Convenience

- Automotive-grade mold-formed steel hood with high structural strength and elegant appearance.
- The double gas spring opens the hood and is easy to operate.
- Large opening side door maintenance is more convenient.



## Adaptability

- Equipped the oil-bath filter to meet the abominable environment(option).



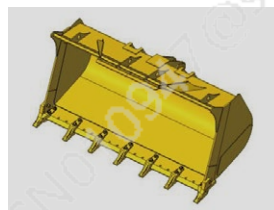
## Heavy-Duty

- Heavy-duty drive axle and oscillating rear drive axle jointly developed by Volvo and SDLG; Meet the driving force and escape ability of bad conditions.
- The unique rear axle double swing arm connection makes the load distribution of the whole machine reasonable, large bearing capacity, long service life and high reliability.



## Greater Carrying Capacity

- Serialized low - resistance buckets not only meet the needs of different working conditions and customers, but also improve work efficiency and create more value for customers.



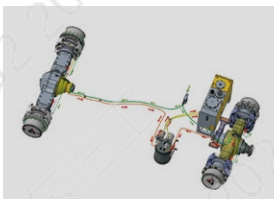
## Comfortability

- The super-large, full-view, Low noise, Double curved arc front windshield, Luxury seat and User-friendly design, to build the best operating environment. Inner space increased by 15%; Width of view increased by 20%; Sealing properly increased by 35%; with powerful air condition.



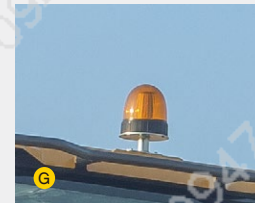
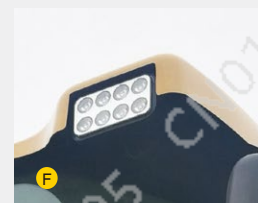
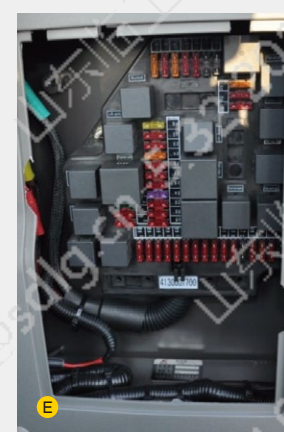
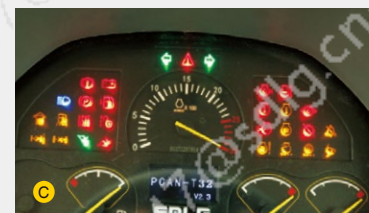
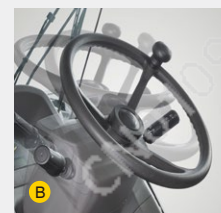
## Safety

- Equipped with a brake circulation system to prevent high temperatures in the braking system, ensuring efficient and reliable braking.



## Standard Confugurations

Weichai WP10G270E341 engine	Backing-up alarm
Volvo HTE220B Auto Transmission	26.5-25-20PR-L3 (Front tire)
SDLG axle	26.5-25-20PR-L3 (Rear tire)
Finger tip lever	Engine fan guard
4.0m³ GP bucket	Neutral start
Standard cabin	Air pre-filter
Fresh air conditioning	Power switch
Adjustable steering column	Tool box
Digital combination instrument	Rotating LED beacon
Air control parking brake	Full hydraulic steering
Radio	Variable flow steering system
Sun visor	Hydraulic drive cooling
Clothes-hook	Box type frame
Cup holder	93 type dust-filter
Centralized control box	Large space cab
Front & rear wiper	
Work lights	



## Optional Equipment

3.5m³~4.0m³ GP Bucket	Warm air blower	Oil bath air-filter
4.2m³~5.5m³ High Capacity Bucket	High Lift Arm	Rear view monitoring system
3.0m³ Rock Bucket	High-Temperature Module for Hydraulic Oil	GPS(For India)
Wear plate	Low-Temperature Module for hydraulic oil and antifreeze	Tire chain
Fops/Rops Cabin	26.5R25-2STTL radial tire	