

LGMG

T20J-H

TELESCOPIC BOOM LIFT

LGMG has a complete line of engine-driven, high-capacity telescopic boom aerial work platforms, with the maximum working height ranging from 21.8 to 29.8 meters (71' 6" / 97' 9"). With a double capacity design of 450/300kg (992/661lbs), the machine can allow up to 3 people to work at the same time both indoors and outdoors, which greatly improves work efficiency.



LGMG Diesel Telescopic Boom Lift

SPECIFICATIONS

MODELS	T20J-H (T65J-H)	
Measurements	Metric	Imperial
Work Height Max.	21.8m	71'6"
Platform Height Max.	19.8m	65'
Horizontal Outreach Max.	16.6m	54'6"
Platform Length	2.44m	8'
Platform Width	0.9m	2'11"
A Stowed Length	10.2m	33'6"
Length-Transport (jib tucked)	8.3m	27'3"
B Overall Width	2.49m	8'2"
C Stowed Height	2.78m	9'1"
Height-Transport	2.89m	9'6"
D Wheelbase	2.51m	8'3"
E Ground Clearance	0.4m	1'4"

PRODUCTIVITY

Max. Platform Occupants	2 (unrestricted) / 3 (restricted)	
Platform Capacity (unrestricted)	300kg	661 lbs
Platform Capacity (restricted)	450kg	992 lbs
Turntable Rotation	360°Continuous	
Drive Speed-Stowed	4.8km/h	3mph
Drive Speed-Raised	0.8km/h	0.5mph
Gradeability	45%	45%
Max. Wind Speed	12.5m/s	28mph
Turning Radius-Inside	2.5m	8'2"
Turning Radius-Outside	5.5m	18'
Max.Slope	5°/5°	5°/5°
Tire Type	RT Foam-filled	
Tire Models	355/55D625	355/55D625
Ground Pressure, Tyres	670 kPa	97.2 psi

POWER

Power	Kubota V2403 36kW/48.2hp Deutz D2.9 L4 36.4kw/48.8hp	
Fuel Tank Capacity	100L	26.4gal

HYDRAULIC SYSTEM

Hydraulic Oil Volume	180L	47.5gal
----------------------	------	---------

WEIGHT

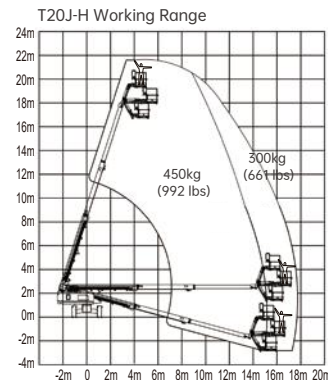
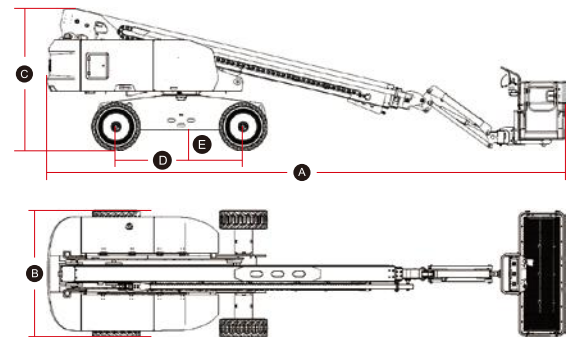
Machine Weight (CE/ANSI)	12,000kg	26,455 lbs
--------------------------	----------	------------

STANDARD FEATURES

Proportional control	Emergency stop button
Horn/Hour meter	Auto-leveling platform
Platform control cover	Anti-collision protection
Flashing beacons	Over-tilt protection system
Cylinder bellows	Overload sensing system
Platform tool box	Intelligent diagnostic system
Oscillating axle	Descent alarm with flashing beacon
Telematics connector	RT Foam-filled tires

OPTIONAL

Telematics	Solid tires
Glazier kit	Solid non-marking tires
Auxiliary rail	Foam-filled non-marking tires
Hydraulic generator kit	Half-height mesh platform
Hydraulic oil radiator	3.5kw Hydraulic generator
Cold weather package	Biodegradable hydraulic oil
AC power to platform	



Please contact LGMG or a local dealer for more details.

LGMG reserves the right to change technical data without prior notice. All photos and pictures in this brochure are for promotional purposes only.

LINGONG HEAVY MACHINERY CO., LTD.

Address: No. 2676, Kejia Road, Jinan, Shandong, China
Email: sales@lmg.com.cn Tel: +86 531 6787 9283

LGMG Europe B.V.

Address: Donker Duyvisweg 301, 3316 BL Dordrecht, The Netherlands
Email: sales@lmg-europe.com Tel: +31 850 642 777

LGMG North America Inc.

Address: 4105 Live Oak Drive, Suite 100, The Colony, Texas 75056 United States
Email: sales@lmg-na.com Tel: +1 833 288 5464

www.lmg-lifts.com

 **LGMG**
RELIABILITY IN ACTION