

# LGMG

## T26JE

### TELESCOPIC BOOM LIFT

LGMG's new electric telescopic boom aerial work platform is equipped with a lithium battery, which has the advantages of low noise and zero emissions. The maximum working height of the platform ranges from 21.8 to 29.8 meters (71' 6" / 97' 9" ). Platform accommodates up to 3 people and 450/300kg (992/661 lbs) dual capacity design for increased work efficiency. Excellent performance in driving performance, stability and operating precision, suitable for various harsh working environments.





# LGMG Green Tech Telescopic Boom Lift

## SPECIFICATIONS

MODELS	T26JE ( T85JE )	
Measurements	Metric	Imperial
Work Height Max.	27.9m	91'6"
Platform Height Max.	25.9m	85'
Horizontal Outreach Max.	21.6m	70'10"
Platform Length	2.44m	8'
Platform Width	0.9m	2'11"
<b>A</b> Stowed Length	12.8m	42'
Length-Transport (jib tucked)	11m	36'1"
<b>B</b> Overall Width	2.5m	8'2"
<b>C</b> Stowed Height	2.82m	9'3"
Height-Transport	3.03m	9'11"
<b>D</b> Wheelbase	2.85m	9'4"
<b>E</b> Ground Clearance	0.4m	1'4"

## PRODUCTIVITY

Max. Platform Occupants	2 (unrestricted) / 3 (restricted)	
Platform Capacity (unrestricted)	300kg	661 lbs
Platform Capacity (restricted)	450kg	992 lbs
Turntable Rotation	360°Continuous	
Drive Speed-Stowed	5km/h	3.1mph
Drive Speed-Raised	0.8km/h	0.5mph
Gradeability	45%	45%
Max. Wind Speed	12.5m/s	28mph
Turning Radius-Inside	2.04m	6'8"
Turning Radius-Outside	4.13m	13'7"
Max.Slope	5°/5°	5°/5°
Tire Type	Foam-filled non-marking	
Tire Models	15-625	15-625
Ground Pressure, Tyres	899 kPa	130.4 psi

## POWER

Power Source	80V DC 542Ah
--------------	--------------

## HYDRAULIC SYSTEM

Hydraulic Oil Volume	138L	36.5gal
----------------------	------	---------

## WEIGHT

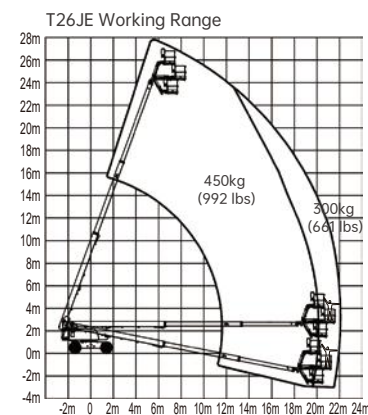
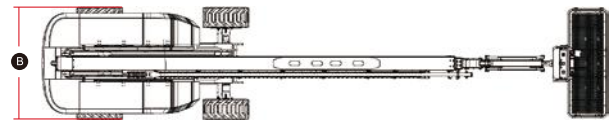
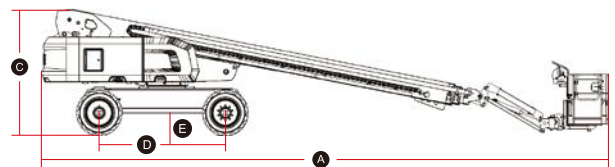
Machine Weight (CE/ANSI)	18,200kg	40,124 lbs
--------------------------	----------	------------

## STANDARD FEATURES

Proportional control	Emergency stop button
Horn/Hour meter	Auto-leveling platform
Descent alarm	Anti-collision protection
Flashing beacons	Over-tilt protection system
Cylinder bellows	Platform control cover
Platform tool box	Overload sensing system
Oscillating axle	Intelligent diagnostic system
Telematics connector	Foam-filled non-marking tires

## OPTIONAL

Telematics	Solid tires
Glazier kit	Solid non-marking tires
Auxiliary rail	Foam-filled tires
AC power to platform	Biodegradable hydraulic oil
Half-height mesh platform	



Please contact LGMG or a local dealer for more details.

LGMG reserves the right to change technical data without prior notice. All photos and pictures in this brochure are for promotional purposes only.

## LINGONG HEAVY MACHINERY CO., LTD.

Address: No. 2676, Kejia Road, Jinan, Shandong, China  
Email: sales@lgmg.com.cn Tel: +86 531 6787 9283

## LGMG Europe B.V.

Address: Donker Duyvisweg 301, 3316 BL Dordrecht, The Netherlands  
Email: sales@lgmg-europe.com Tel: +31 850 642 777

## LGMG North America Inc.

Address: 4105 Live Oak Drive, Suite 100, The Colony, Texas 75056 United States  
Email: sales@lgmg-na.com Tel: +1 833 288 5464

www.lgmglifts.com

**LGMG**  
RELIABILITY IN ACTION